

# CITY OF KELOWNA

## BYLAW NO. 9397

### **Road Closure and Removal of Highway Dedication Bylaw** **(Union Road)**

**A bylaw pursuant to Section 40 of the Community Charter  
to authorize the City to permanently close and remove the  
highway dedication of a portion of highway on Union Road**

---

NOW THEREFORE, the Municipal Council of the City of Kelowna, in open meeting assembled, hereby enacts as follows:

1. That portion of highway attached as Schedule "A" comprising 386.8 m<sup>2</sup> shown in bold black as Parcel A on the Reference Plan prepared by Thomas E. Ferguson, B.C.L.S. and completed on 11th day of April, 2005, is hereby stopped up and closed to traffic and the highway dedication removed.
2. That portion of highway attached as Schedule "A" comprising 0.368 Ha shown in bold black as Parcel B on the Reference Plan prepared by Thomas E. Ferguson, B.C.L.S. and completed on 11th day of April, 2005, is hereby stopped up and closed to traffic and the highway dedication removed.
3. The Mayor and City Clerk of the City of Kelowna are hereby authorized to execute such conveyances, titles, survey plans, forms and other documents on behalf of the said City as may be necessary for the purposes aforesaid and to affix the Corporate Seal of the said City thereto.

Read a first, second and third time by the Municipal Council this       day of       , 2005.

Adopted by the Municipal Council of the City of Kelowna this       day of       , 2005.

---

Mayor

---

City Clerk

REFERENCE PLAN TO ACCOMPANY CITY OF KELOWNA ROAD  
CLOSURE AND REMOVAL OF HIGHWAY DEDICATION BY-LAW  
NO. 9397, OF PART OF ROAD WITHIN SECTION 9,  
TOWNSHIP 23, O.D.Y.D.

PURSUANT TO SECTION 40 OF THE COMMUNITY CHARTER.

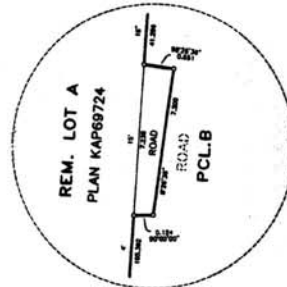
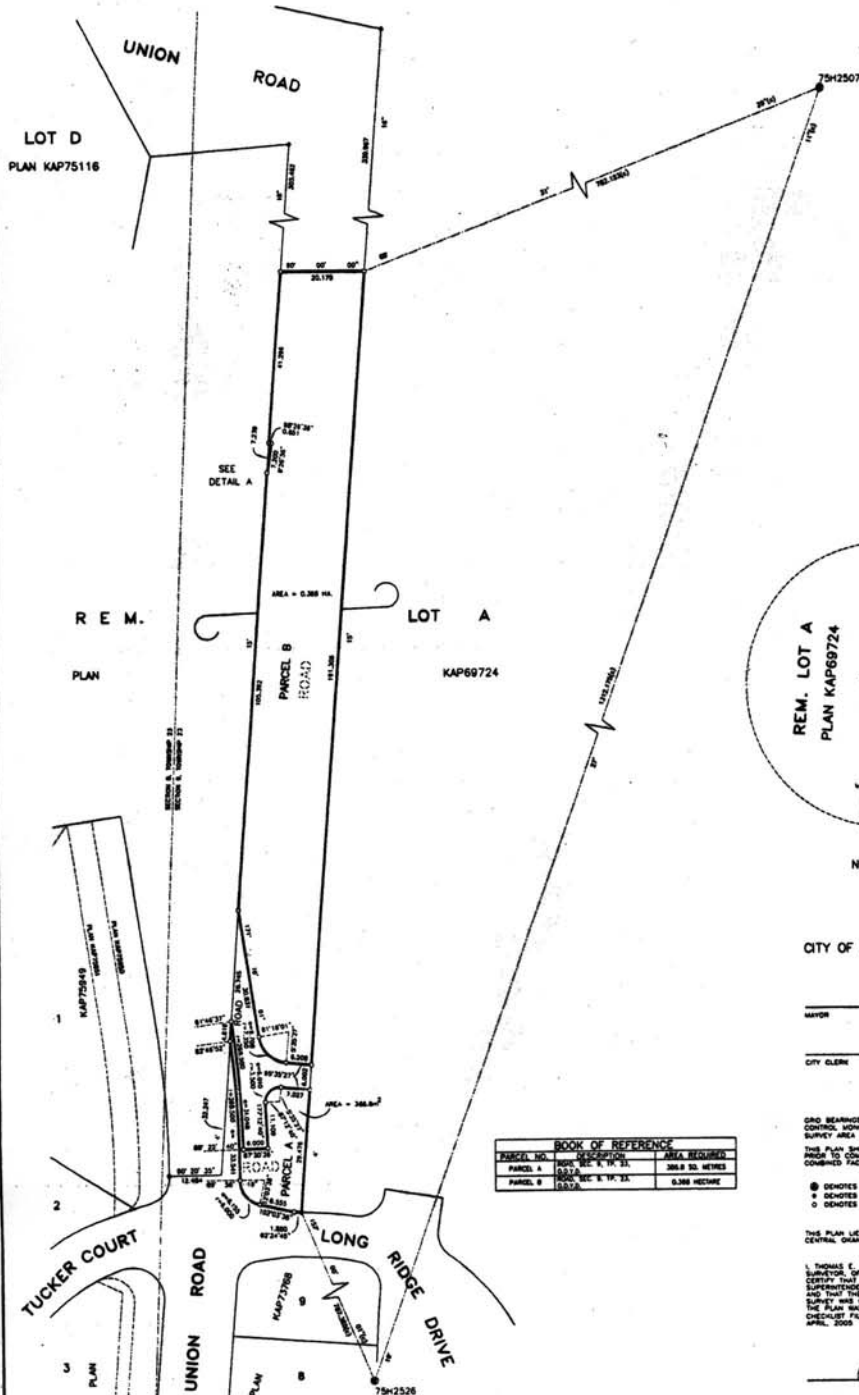
B.C.G.S. 82E.093  
SCALE: 1:500 METRES

10 0 10 20 30 METRES

### Schedule "A"

PLAN KAP \_\_\_\_\_  
REGISTERED IN THE LAND TITLE OFFICE AT KAMLOOPS, B.C.  
DATE \_\_\_\_\_

REGISTERED



DETAIL A  
NOT TO SCALE

CITY OF KELOWNA

WITNESS

AS TO BOTH SIGNATURES

NAME:

NAME:

OCCUPATION:

OCCUPATION:

ADDRESS:

ADDRESS:

CITY CLERK

#### LEGEND

AND BEARINGS ARE DERIVED FROM OBSERVATION BETWEEN  
CONTROL MONUMENTS 75H2507 AND 75H2526 INTEGRATED  
SURVEY AREA NO. 4 - CITY OF KELOWNA (HARDY CORN).

THIS PLAN SHOWS BOUNDARY LINES MEASURED DISTANCES  
FROM TO CORRELATION OF UTM COORDINATES MULTIPLY BY  
CORRECTION FACTOR 0.99991015

- DENOTES CONTROL MONUMENT
- DENOTES STANDARD IRON POST FOUND
- DENOTES STANDARD IRON POST SET

THIS PLAN LIES WITHIN THE REGIONAL DISTRICT OF  
CENTRAL OKANAGAN.

I, THOMAS E. FERGUSON, A BRITISH COLUMBIA LAND  
SURVEYOR, OF THE CITY OF KELOWNA 20 BRIDGE, COLUMBIA,  
CERTIFY THAT THE SURVEY AT AND PERSONALLY  
SUPERVISED AND IS CORRECTLY REPRESENTED BY THIS PLAN.  
AND THAT THE PLAN IS CORRECT AND COMPLETE. THE FIELD  
SURVEY WAS COMPLETED ON THE 11TH DAY OF APRIL, 2005.  
THE PLAN WAS COMPLETED AND CHECKED, AND THE  
CHECKLIST FILED UNDER (EOP-29728, ON THE 11TH DAY OF  
APRIL, 2005.

*T. Ferguson*  
S.L.S.

T.E. Ferguson Land Surveying Ltd.  
S.L.S. AND CIVIL ENGINEERING  
214-1224 ROYAL STREET, KELOWNA, B.C.  
K1P 6H6  
PHONE (250) 863-1015  
FAX (250) 863-0321

JOB NO. 14820-1C-RC

Copyright © 2005 T.E. Ferguson Land Surveying Ltd. All Rights Reserved.